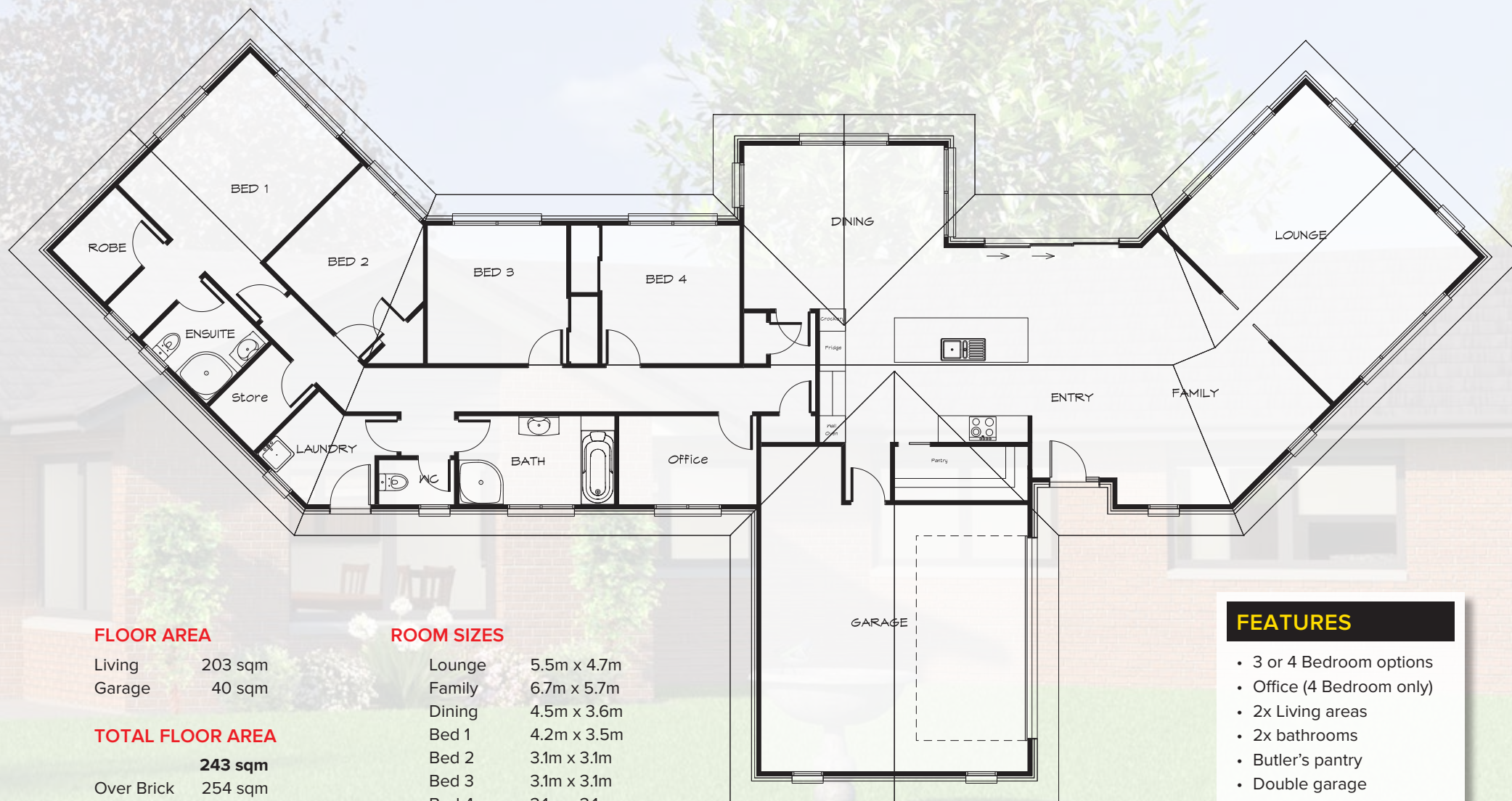


# THE PARKVIEW

## 4 Bedroom plus office



### FLOOR AREA

Living	203 sqm
Garage	40 sqm

### TOTAL FLOOR AREA

	<b>243 sqm</b>
Over Brick	254 sqm

### ROOM SIZES

Lounge	5.5m x 4.7m
Family	6.7m x 5.7m
Dining	4.5m x 3.6m
Bed 1	4.2m x 3.5m
Bed 2	3.1m x 3.1m
Bed 3	3.1m x 3.1m
Bed 4	3.1m x 3.1m
Office	3.0m x 2.0m
Garage	6.0m x 6.0m

Overall Length & Width 32.3m x 16.3m

### FEATURES

- 3 or 4 Bedroom options
- Office (4 Bedroom only)
- 2x Living areas
- 2x bathrooms
- Butler's pantry
- Double garage
- Lots of storage